

Elastomerics & Accessories

DENTSPLY GAC has a wide assortment of elastomeric ligatures, ties, chain, tubing, accessories and more all designed to maximize clinical functionality and treatment efficiency. Medical grade polymers provide

excellent retention and rebound. Offering both latex and latex free, for your sensitive patients, our elastics are conveniently coded for quick, easy identification.

For better dentistry

DENTSPLY
GAC

800.645.5530 | www.gacintl.com

Elastomeric Section Content

Intraoral Elastics	227
Elastomeric Ligature Ties	230
Elastomeric Chains	231
Ligature & Chain Color Chart	232
Elastic Accessories	234
Thread Options	235
Loose & Caned Ties	236
Molded Elastomeric Separators	237

Intraoral Elastics

Latex Elastics

- Manufactured from prime medical grade latex
- Unique manufacturing process eliminates the heavy use of talc and partially cut elastics
- Packaged in color coded bags, elastics are simple to dispense and easy for the patient to use
- Packaged in tamper proof patient bags of 100 elastics and one Elasti™ placer; 50 bags per dispenser box
- Our Travel Pack recognition system makes it fun and easy for patients to remember the correct size and force
- Each pack of GAC intraoral elastics contains a bright white placer to help patients properly and easily use their elastics
- Light, Medium, Heavy, and SH intraoral elastics are packaged in boxes of 50 zip lock bags of 100 elastics
- XH and XXH extra oral elastics are packaged in boxes of 25 zip lock bags of 50 elastics

See page 228 for item numbers and sizes

Sunburst™ Elastics

- Neon, latex elastics
- Five bright colors mixed in each patient bag
- Packaged in tamper proof patient bags of 100 elastics and one Elasti™ placer; 50 bags per dispenser box

See page 228 for item numbers and sizes

Latex Free Elastics

- Eliminates concerns over latex allergic reactions
- Crystal clear appearance, for a great aesthetic look in the mouth
- Same force and sizing as latex elastics
- Longer shelf life than latex
- Perfect for use with aligner cases and ceramic and composite brackets
- Packaged in tamper proof patient bags of 100 elastics and one Elasti™ placer; 50 bags per dispenser box

See page 229 for item numbers and sizes

Latex Free Elastics – Neon

- Eliminates concerns over latex allergic reactions
- Five bright colors mixed in each patient bag
- Packaged in tamper proof patient bags of 100 elastics and one Elasti™ placer; 50 bags per dispenser box

See page 229 for item numbers and sizes

Shade variations may occur from one lot to another.



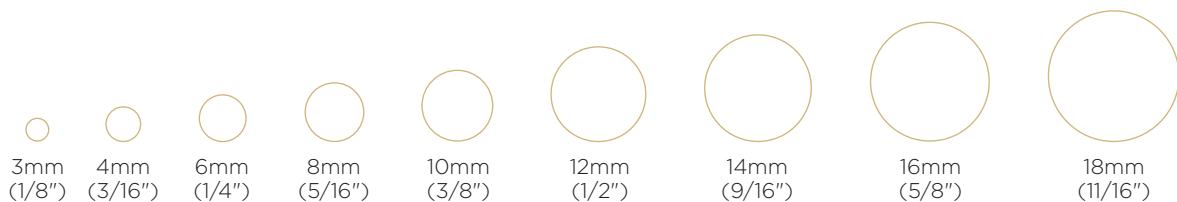
Intraoral Elastics

Latex

Force	Inside Diameter	Intraoral Reference #/Name	Extra Oral Reference #/Name	Sunburst Reference #
Light - Red 1.8oz	3mm (1/8")	11-100-03/Australia		
	4mm (3/16")	11-100-04/Holland		
	6mm (1/4")	11-100-06/China		
	8mm (5/16")	11-100-08/Canada		
	10mm (3/8")	11-100-10/England		
	16mm (5/8")	11-100-16/Ireland		
Medium - Green 2.7oz	3mm (1/8")	11-101-03/Germany		11-001-03
	4mm (3/16")	11-101-04/Mexico		11-001-04
	6mm (1/4")	11-101-06/USA		11-001-06
	8mm (5/16")	11-101-08/Italy		11-001-08
	10mm (3/8")	11-101-10/Spain		
Heavy - Blue 4.0oz	3mm (1/8")	11-102-03/India		
	4mm (3/16")	11-102-04/Switzerland		11-002-04
	6mm (1/4")	11-102-06/Japan		11-002-06
	8mm (5/16")	11-102-08/Scandinavia		11-002-08
	10mm (3/8")	11-102-10/France		
Super Heavy - Black 6.0oz	3mm (1/8")		11-103-03/Fiji	
	4mm (3/16")		11-103-04/Thailand	11-003-04
	6mm (1/4")		11-103-06/Korea	11-003-06
	8mm (5/16")		11-103-08/So. America	11-003-08
	10mm (3/8")			
	12mm (1/2")			
	14mm (9/16")			
	16mm (5/8")			
	18mm (11/16")			
XH - Brown 6.0oz	8mm (5/16")		11-104-08/Greece (A)	
	10mm (3/8")		11-104-10/Greece (B)	
	12mm (1/2")		11-104-12/Greece (C)	
	14mm (9/16")		11-104-14/Greece (D)	
	16mm (5/8")		11-104-16/Greece (E)	
	18mm (11/16")		11-104-18/Greece (F)	
XXH - 8.0oz	4mm (3/16")		11-105-04/Africa	
	6mm (1/4")		11-105-06/Kenya	
	8mm (5/16")		11-105-08/Argentina	
	10mm (3/8")		11-105-10/Peru	

Latex Free

Force	Inside Diameter	Latex Free Reference #/Name	Latex Free Neon Reference #
Light - Red 1.8oz	3mm (1/8")	11-300-03/Canberra	
	4mm (3/16")	11-300-04/Amsterdam	
	6mm (1/4")	11-300-06/Beijing	
	8mm (5/16")	11-300-08/Ottawa	
	10mm (3/8")	11-300-10/London	
	16mm (5/8")	11-300-16/Dublin	
Medium - Green 2.7oz	3mm (1/8")	11-301-03/Berlin	
	4mm (3/16")	11-301-04/Mexico City	11-401-04
	6mm (1/4")	11-301-06/Washington D.C.	11-401-06
	8mm (5/16")	11-301-08/Rome	11-401-08
	10mm (3/8")	11-301-10/Madrid	
Heavy - Blue 4.0oz	3mm (1/8")	11-302-03/New Delhi	
	4mm (3/16")	11-302-04/Bern	11-402-04
	6mm (1/4")	11-302-06/Tokyo	11-402-06
	8mm (5/16")	11-302-08/Stockholm	11-402-08
	10mm (3/8")	11-302-10/Paris	
Super Heavy - Black 6.0oz	3mm (1/8")	11-303-03/Suva	
	4mm (3/16")	11-303-04/Bangkok	11-403-04
	6mm (1/4")	11-303-06/Seoul	11-403-06
	8mm (5/16")	11-303-08/Buenos Aires	11-403-08
	10mm (3/8")		
	12mm (1/2")		
	14mm (9/16")		
	16mm (5/8")		
18mm (11/16")			



Actual Size Chart

Elastomeric Ligature Ties



- Excellent stretch and rebound, and will not take a set
- Tear resistant design featuring rounded corners and a flat top provides a strong ligature tie that holds the wire tighter and longer
- The low profile design fits under bracket tie-wings, and will not irritate the gingiva
- Available in vibrant colors that resist fading

Sani-Tie® Elastomers

- Individual patient configuration eliminates potential patient cross contamination
- Available in .110" and .120" diameter sizes
- Packaged in bags of 45 sticks, 22 ties each stick

See page 232 for item numbers and sizes



Mini Ties

- Mini ties contain 10 ties per dispenser, making them truly patient specific
- Allows the use of a unique color on each arch, without contamination issues or waste
- Available in a .120" diameter size
- Packaged in bags of 100 sticks, 10 ties each stick

See page 232 for item numbers and sizes



Sili Ties™ Silicone Infused Ties

- Injected with a silicone additive that is time-released during the life of the product while in the mouth
- Slick surface makes it easy to place on ceramic brackets and provides reduced friction with wires during treatment - will not wear off due to abrasion, like other coated ties
- .120" diameter size
- Packaged in bags of 45 sticks, 22 ties each stick

See page 232 for item numbers and sizes



Elasto Rings

- .120" diameter size
- Packaged in bags of 10 rings, 100 ties each ring

See page 232 for item numbers and sizes

Elastomeric Chains

- Available in short, medium, and long size variations; 15 ft spools
- A small window on the back of every spool indicates remaining chain

Sunburst™ Elastomeric Chain

- Excellent stretch and rebound, giving superior elongation for easy application
- Available in colored spools, for easy identification in the office
- Available in a wide array of colors

See page 233 for item numbers and sizes



Sili Chain™ Elastomeric Chain

- Injected with a silicone additive that is time-released during the life of the product while in the mouth
- Slick surface makes it easy to place on ceramic brackets, and provides reduced friction with wires during treatment

See page 233 for item numbers and sizes



Super Chain™ Elastomeric Chain

- Provides an optimal and consistent force
- Its super thin profile provides the versatility to piggyback with Sani-Tie® Elastomers
- Available in 3, 2mm spools



	Item # Clear	Item # Silver
6M Short	KIT34-012-68	KIT34-022-68
6M Medium	KIT34-013-68	KIT34-023-68
6M Long	KIT34-011-68	KIT34-021-68

See page 233 for item numbers and sizes

AccuChain®

Our new AccuChain follows our philosophy of a lighter, longer acting, more constant force for moving teeth. AccuChain is also more color stable than others for longer stretches between appointments. Available in spools of 15'; clear & silver; short, medium, and long.

	Reference Number		
	*Short (3mm)	*Medium (3.6mm)	*Long (4mm)
Silver	34-062-78	34-063-78	34-061-78
Clear	34-072-78	34-073-78	34-071-78

(*refers to distance between the center of one aperture and center of the next aperture)

Elastomers & Accessories

Ligature & Chain Color Chart



Color Name



.110" Ties

.120" Ties

Mini Ties


Sili Ties

Elasto Ring

Color Name	.110" Ties	.120" Ties	Mini Ties	Sili Ties	Elasto Ring
Multi Red/Blue/Green	59-700-00	59-600-00			
Multi Pink/Purple/Orange	59-700-01	59-600-01			
Multi Pastel: Pink/Yellow/Green	59-700-52	59-600-52			
Multi Red/White/Blue	59-700-53	59-600-53			
Clear	59-200-70	59-200-35	59-650-70	59-950-00	
Glow Clear	59-700-33	59-600-33	59-650-33		
Pearlescent	59-700-55	59-600-55	59-650-55	59-950-55	
White	59-700-10	59-600-10	59-650-10		
Tooth Color	59-300-70	59-300-35			
Pastel Yellow	59-700-28	59-600-28			
Yellow	59-700-09	59-600-09	59-650-09		
Jelly Yellow	59-700-43	59-600-43			
Gold	59-700-13	59-600-13	59-650-13		
Metallic Copper	59-700-49	59-600-49			
Brown		59-600-19			
Platinum		59-600-30			
Light Gray	59-100-70	59-100-35			
Silver	59-700-14	59-600-14	59-650-14	59-950-03	59-400-14
Dark Gray			59-650-71		
Smoke	59-700-21	59-600-21	59-650-21		
Black	59-700-02	59-600-02	59-650-02		
Metallic Black	59-700-47	59-600-47			
Pearl Green		59-600-59			
Glow Green	59-700-35	59-600-35	59-650-35		
Pastel Green	59-700-27	59-600-27	59-650-72		
Spring Green	59-700-17	59-600-17	59-650-17		
Jelly Green	59-700-42	59-600-42			
Green	59-700-05	59-600-05	59-650-05		
Jade	59-700-32	59-600-32			
Emerald	59-700-23	59-600-23	59-650-23		
Metallic Green		59-600-60			
Metallic Ocean Green	59-700-46	59-600-46			
Aqua	59-700-11	59-600-11	59-650-11		
Teal	59-700-22	59-600-22	59-650-22		
Tar Heel Blue	59-700-56	59-600-56			
Light Blue	59-700-15	59-600-15	59-650-15		
Pearl Blue	59-700-58	59-600-58			
Jelly Blue	59-700-40	59-600-40			
Glow Blue	59-700-36	59-600-36	59-650-36		
Sapphire	59-700-31	59-600-31			
Blue	59-700-04	59-600-04	59-650-04		
Navy Blue	59-700-25	59-600-25	59-650-25		
Metallic Blue	59-700-18	59-600-18			
Amethyst	59-700-29	59-600-29			
Lavender	59-700-16	59-600-16	59-650-16		
Glow Purple	59-700-38	59-600-38			
Jelly Plum	59-700-41	59-600-41			
Purple	59-700-07	59-600-07	59-650-07		
Metallic Purple	59-700-48	59-600-48			
Pastel Pink	59-700-26	59-600-26	59-650-73		
Pink	59-700-51	59-600-51	59-650-51		
Glow Pink	59-700-37	59-600-37			
Bright Pink	59-700-06	59-600-06			
Fuschia	59-700-24	59-600-24	59-650-24		
Bright Red	59-700-54	59-600-54	59-650-54		
Red	59-700-03	59-600-03	59-650-03		
Jelly Red	59-700-39	59-600-39			
Metallic Red	59-700-20	59-600-20			
Maroon	59-700-12	59-600-12	59-650-12		
Glow Orange	59-700-34	59-600-34			
Orange	59-700-50	59-600-50	59-650-50		
Bright Orange	59-700-08	59-600-08			

Actual Size
Example
(in inches)

 .110" at
Actual Size

 .120" at
Actual Size

All products are .120" in diameter
unless otherwise noted.



**Sunburst
Short Chain**



**Sunburst
Long Chain**



**Sili
Short Chain**



**Sili
Medium Chain**



**Sili
Long Chain**



**Super
Chain Short**



**Super
Chain Medium**



**Super
Chain Long**

59-200-01	59-300-01	59-851-00	59-852-00	59-853-00	34-012-68	34-013-68	34-011-68
59-200-32	59-300-32						
59-200-55	59-300-55	59-851-55	59-852-55	59-853-55			
59-200-15	59-300-15						
59-200-10	59-300-10						
59-200-28	59-300-28						
59-200-27	59-300-27						
59-200-13	59-300-13						
59-200-45	59-300-45						
59-200-19	59-300-19						
59-200-37	59-300-37						
59-200-14	59-300-14	59-851-03	59-852-03	59-853-03	34-022-68	34-023-68	34-021-68
59-200-09	59-300-09						
59-200-21	59-300-21						
59-200-02	59-300-02						
59-200-44	59-300-44						
59-200-33							
59-200-30	59-300-30						
59-200-17	59-300-17						
59-200-41	59-300-41						
59-200-05	59-300-05						
59-200-39	59-300-39						
59-200-23	59-300-23						
59-200-46	59-300-46						
59-200-26	59-300-26						
59-200-22	59-300-22						
59-200-56	59-300-56						
59-200-25	59-300-25						
59-200-40	59-300-40						
59-200-11							
59-200-38	59-300-38						
59-200-04	59-300-04						
59-200-31	59-300-31						
59-200-18	59-300-18						
59-200-36	59-300-36						
59-200-16	59-300-16						
59-200-42	59-300-42						
59-200-07	59-300-07						
59-200-47	59-300-47						
59-200-29	59-300-29						
59-200-51	59-300-51						
59-200-06	59-300-06						
59-200-24	59-300-24						
59-200-03	59-300-03						
59-200-43	59-300-43						
59-200-20	59-300-20						
59-200-12	59-300-12						
59-200-34							
59-200-50	59-300-50						
59-200-08	59-300-08						

Elastic Accessories

Elastics Dispensers

- Metal
- Holds 4 boxes
- Mounting holes are provided



Reference Number

Latex Dispenser

97-300-30

Elastics Placer

- The unique design provides an elastic hook on one end and pusher on the other end to remove elastics
- Also placers provide an excellent tool when convincing patients to wear and regularly change orthodontic elastics
- White, packs of 100



Reference Number

Placer

11-999-99

Thermoform Chain Dispenser

- Transparent color makes it easy to see different chain colors
- Unique holes allow the thread and chain to be dispensed easily and quickly
- The dispenser can hold up to 5 standard sized spools of chain or thread
- Small enough to store on a countertop without taking up excessive space
- Lightweight and economically priced



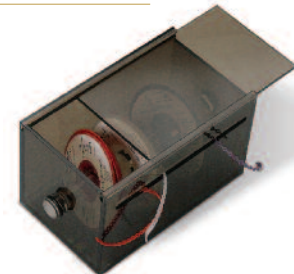
Reference Number

Chain Dispenser

97-832-66

Acrylic Chain Dispenser

- Manufactured from heavy duty acrylic
- Holds up to 10 spools of chain
- Interior roller makes dispensing & refilling easy
- Available in smoke acrylic



Reference Number

Acrylic Chain Dispenser

97-832-00

Thread Options

Las-Thread & Las-O-Thread

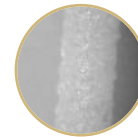
- Unmatched strength and rebound
- Hollow and square variations are available for securing knots efficiently
- Available in .025" and .030" diameter sizes, in clear and gray color variations
- Available in spools of 25 and 50 feet

Ultra Thread

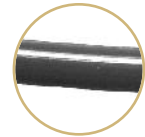
- Unique patented manufacturing process provides a rough surface on the thread
- Knots will not slide or come unraveled during treatment
- A leading elastomeric thread in the market, provides excellent elasticity and memory
- Available in .025" and .030" diameter sizes providing varying degrees of force for a variety of applications
- Available in spools of 25 feet



Ultra Thread Is A Huge Improvement To The Standard Elastomeric Thread



Ultra Thread
60x Micro Magnification



Standard Elastomeric Thread
60x Micro Magnification



	Las-Thread Round Solid	Las-O-Thread Round Hollow	Ultra Thread Round Solid
25 Foot Spool Gray .025"	34-225-12	34-225-02	34-425-12
50 Foot Spool Gray .025"	34-250-12	34-250-02	
25 Foot Spool Gray .030"	34-325-12	34-325-02	34-430-12
50 Foot Spool Gray .030"	34-350-12	34-350-02	
25 Foot Spool Clear .025"	34-225-11	34-225-01	34-425-11
50 Foot Spool Clear .025"	34-250-11	34-250-01	
25 Foot Spool Clear .030"			34-430-11
50 Foot Spool Clear .030"	34-350-11		

Square Energy Thread

- Edges eliminate slippage with sizing used with V-slot MicroArch® or any eyelet
- Sturdy, convenient with unequalled memory
- Excellent for use with the Eruption Appliance
- Available in gray, in spools of 25 feet



Reference Number

.025" x .025" diameter

34-666-66

Loose & Caned Ties

Caned Elastomeric Ties

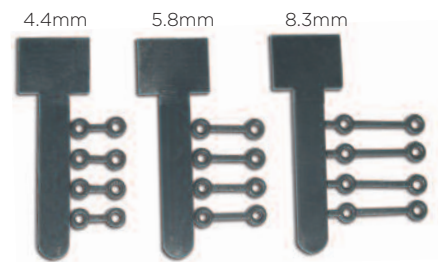
- Excellent stretch and rebound
- The unique packaging eliminates waste, making it environmentally friendly
- Special care is taken so each tie is of a uniform cut, reducing breakage
- Available in loose variations, or on a metal cane, for easy dispensing



Caned Ties	.110" 20 Canes of 50 Ties Each	.120" 20 Canes of 50 Ties Each
<input checked="" type="checkbox"/> Gray	34-101-01	34-101-02
<input type="checkbox"/> Clear		34-111-02

Twin Ties Elastomeric Modules

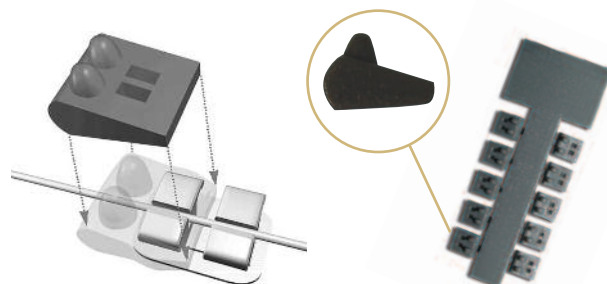
- Ligature ties with connecting bridges, for use with closing intra arch space
- Excellent for rotating individual teeth and connecting bracket hooks
- Molded from medical grade urethane that provides continuous gentle forces
- Available in four unique sizes, packs of 100



	Reference Number
4.4mm	59-900-02
5.8mm	59-900-03
8.3mm	59-900-04

Rotation Wedge

- A revolutionary design that makes tooth rotation easier and faster
- The unique wedge shape design provides increased contact with the tooth surface, allowing for more force to be transmitted to the tooth
- Available in gray or clear, packs of 100



	Gray	Clear
Standard Wedge	97-777-88	97-777-77

Molded Elastomeric Separators

- Design featuring rounded corners and a flat top provides a strong separator with a high resistance to tearing
- Excellent stretch and rebound make separation easy
- The flat top of the separator makes insertion into tight contacts easy, with less breakage
- Colored light blue for easy identification inside the mouth

Molded Separators

- Ten separators per stick, eliminating patient cross contamination
- Packaged in bags of 100 dispensers, 10 separators per dispenser

Molded Thick Separators

- A great solution for hard to separate cases, or cases where appliances such as a palatal expander are used
- Flat sides and round corners make insertion easy
- Ten separators per stick, eliminating patient cross contamination, 50 dispensers per pack

Molded Radiopaque Separators

- Ten separators per stick, eliminating patient cross contamination
- Radiopaque separators will show up on an x-ray, eliminating the potential of lost separators underneath the gum tissue
- Packaged in bags of 100 dispensers, 10 separators per dispenser

Clear Anterior Molded Separators

- Specifically for anterior tooth separation
- The thin profile makes insertion easy, allowing for quick separation
- Perfect for creating space to allow for interproximal stripping
- The transparent color provides a nice aesthetic look during separation
- Available in packages of 500 separators, 10 separators per dispenser



	Reference Number
Molded Separators	34-000-20
Molded Thick Separators	34-000-30
Molded Radiopaque Separators	34-000-10
Clear Anterior Molded Separators	34-000-35

Ideal® Separators

- Innovative design to provide faster, more efficient separation than traditional separators
- Bars on both ends allow for maximum stretch without breakage
- Vertical slot makes it easy to insert with a pair of separating pliers
- Because of the bars on both ends, the durasep cannot slip beneath the gum tissue
- Available in 3 day separation and 8 day separation material variations
- Available in packages of 100 separators, 10 separators per dispenser



	8 Day (Purple)	3 Day (Orange)
Standard Size	34-000-48	34-000-40

Loose Separators

- Manufactured from medical grade polyurethane material
- Two unique sizes, for anterior and posterior separation
- Packaged in loose bags of 100 cut separators



	Anterior Sm (Green)	Posterior Lrg (Blue)
100 Per Package	34-045-01	34-045-02

